



EXCELSIOR INFORMA

COMPANY EMPLOYMENT SCHEMES OBTAINED FROM THE CHAMBER OF COMMERCE SYSTEM

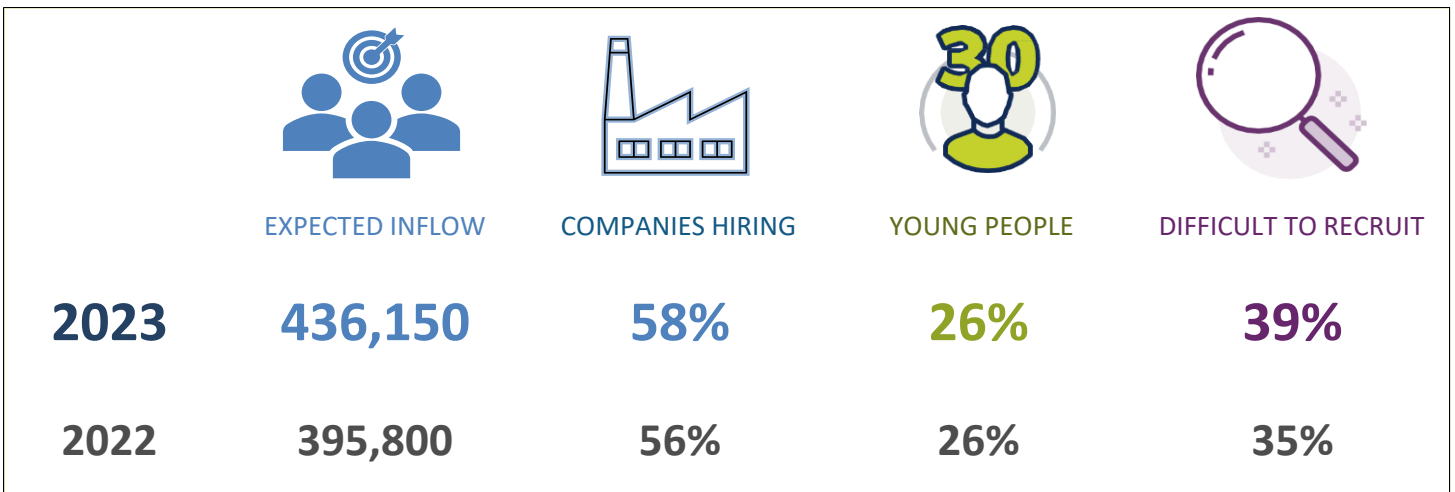
Year 2023
Campania

Introduction

In 2023, the positive trend in job demand planned by companies continues, albeit with a slower growth rate than that recorded in the previous two years. The number of companies that have planned to hire goes from around 785 thousand in 2022 to the current 823 thousand (+4.9%); more marked, equal to +6.4%, will be the increase in the number of workers joining the company workforce, which this year will reach 5.5 million units (compared to 5.2 in the previous year). The improvement in the Excelsior indicators is in line with the main labor market indicators detected by ISTAT, which in the second quarter of 2023 signal an increase in the employment rate (+1.2 points compared to the second quarter of 2022) and, at the same time, a reduction in the unemployment rate (-0.5 points).

However, the growth in demand for labor is accompanied by a greater difficulty for companies in finding the desired profiles, a problem which affects 45% of planned revenues in 2023 (compared to 41% the previous year) and which mainly derives (for approximately two cases out of three) from an insufficient presence of people in the labor market available to join the company. However, problems linked to the inadequacy of candidate preparation with respect to the needs of companies are less frequent (one case in three).

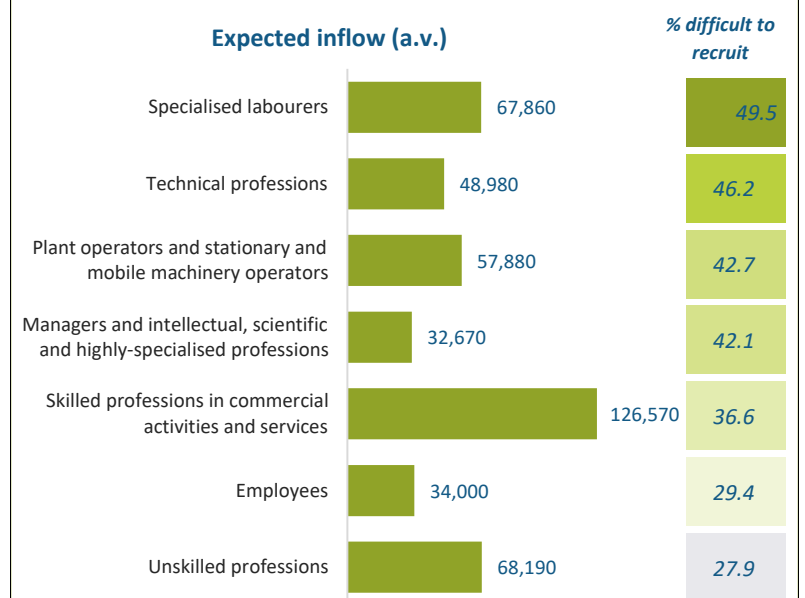
This publication focuses on the main characteristics of the revenues planned in the region for the year 2023.



SUMMARY

Company areas of inclusion and the main professions	page 2
Main characteristics of workers requested by the companies	page 3
Characteristics of inflow by age group	page 4
Skills requested	page 5
Qualifications that offer the greatest job opportunities	page 6
Several characteristics of the companies	page 7
Note on methodology	page 8

Work opportunities in 2023 in the region



N.B. Due to the rounding off, the sum of the single percentage values may differ by 100. This note is valid for all the graphs in this bulletin that show percentage compositions.

COMPANY AREAS OF INCLUSION AND MAIN PROFESSIONS

This page shows the main company areas of inclusion, with several characteristics regarding inflow, and the professions most requested by companies for 2022 in the region. It should be noted that, unless otherwise specified, the professions indicated in the bulletin refer to the classification of professions of ISTAT CP2021 (3 digit).

Characteristics of expected inflow by business area in the region in 2023

BUSINESS AREA	INFLOW (a.v.)	% of total	% up to 29 years	% difficult to recruit
Total	436,150	100.0	26.4	39.0
Direction and General services areas	18,920	4.3	31.2	40.6
Administrative areas	15,260	3.5	20.6	33.4
Technical and planning areas	56,130	12.9	24.9	48.8
Area of production of goods and provision of the service	197,680	45.3	22.8	39.0
Commercial and sales areas	84,610	19.4	42.4	33.1
Logistics areas	63,560	14.6	18.0	39.2

The sectors that expect more inflow in the region in 2023 (a.v.)

Accommodation and catering services; tourist services	81,480
Retail trade, wholesale trade and repair of motor vehicles and motorcycles	67,660
Construction	55,620
Transport, logistics and warehousing services	45,870
Operational support services for businesses and individuals	30,970

The professions most requested in 2023

of which difficult to recruit (%)

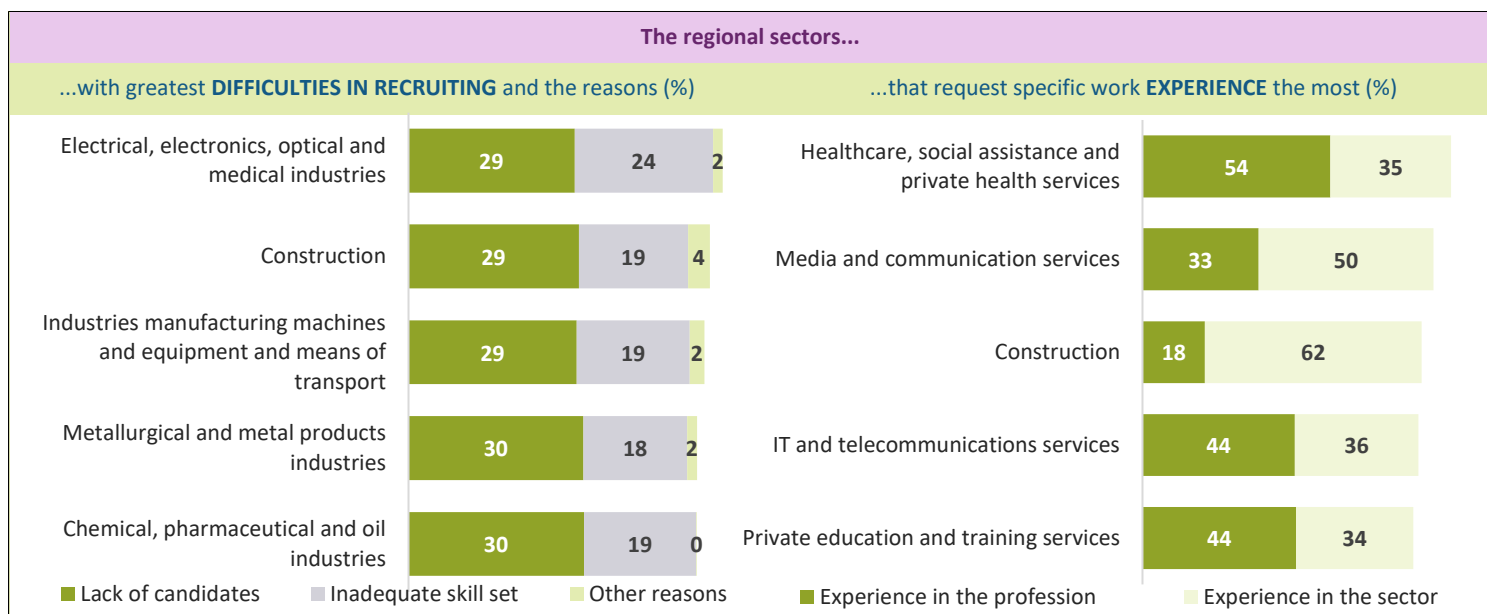
522-Trainers and employees in catering activities	59,970	43
512-Sales employees	47,760	29
814-Unqualified staff in cleaning services	36,530	27
742-Drivers of motor and animal-drawn vehicles	33,920	51
612-Specialized workers involved in the construction and maintenance of building structures	26,690	47
813-Unqualified personnel responsible for moving and delivering goods	20,390	26

MAIN CHARACTERISTICS OF WORKERS REQUESTED BY COMPANIES

The main characteristics of the incoming figures are summarised below, organised by sector. The data concerns the difficulties in recruiting, experience required, gender and type of contract requested; the figure for the region is compared with that of the geographical distribution and the national figure.

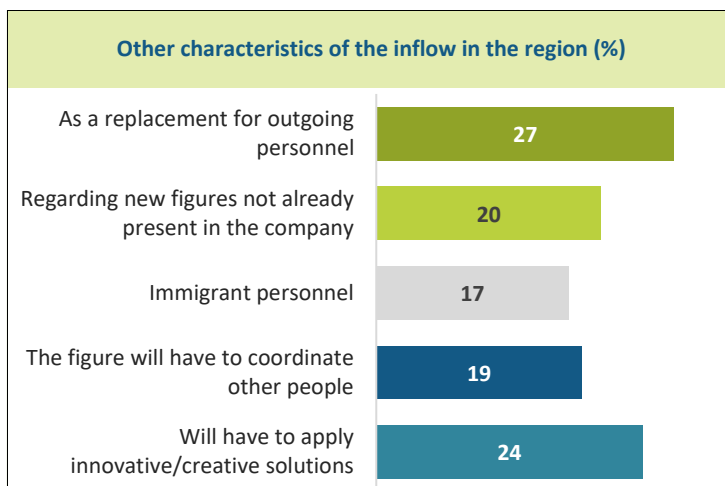
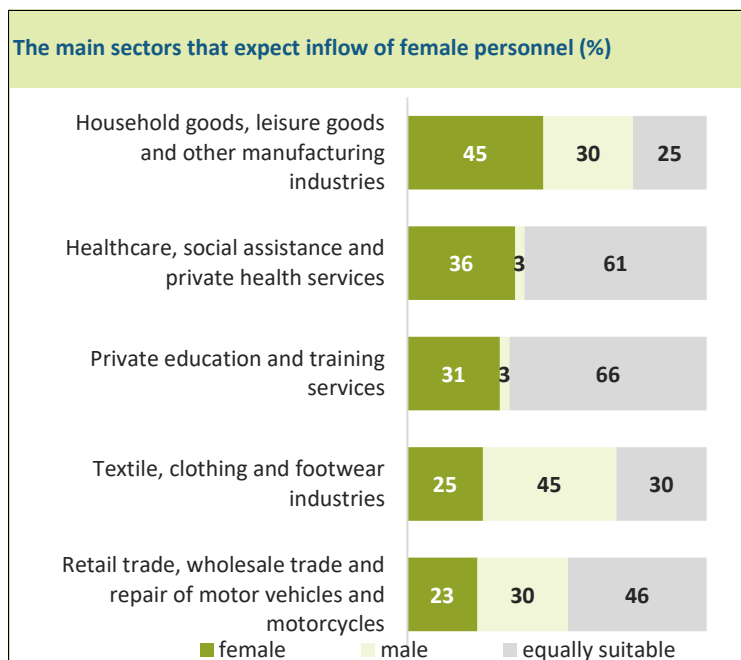
Difficulty in recruiting (%)	Reg.	South and islands	Italia
Total, of which:	39.0	40.9	45.1
for lack of candidates	23.6	24.3	28.4
due to inadequate skill set	11.9	12.9	12.4
for other reasons	3.5	3.8	4.3

Experience requested (%)	Reg.	South and islands	Italia
Total, of which:	70.8	70.2	65.3
in the profession	21.8	22.1	22.2
in the sector	49.0	48.1	43.1
non requested	29.2	29.8	34.7



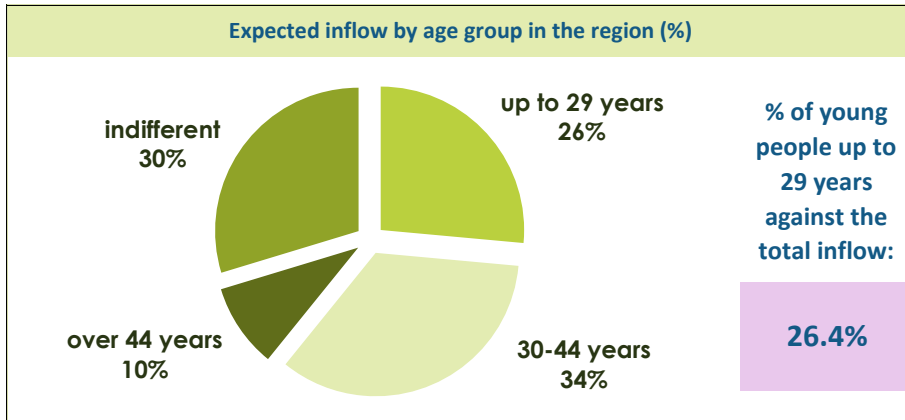
Gender requested (%)	Reg.	South and islands	Italia
female	17.0	17.8	18.0
male	34.4	34.3	31.8
equally suitable	48.6	47.9	50.2

Contracts proposed (% values)	Reg.	South and islands	Italia
Workers employed by the company	88.2	88.0	83.2
with a permanent contract	19.9	16.9	19.7
with a fixed-term contract	61.4	64.3	54.2
with other contracts	6.9	6.8	9.3
Company non-salaried workers	11.8	12.0	16.8
agency workers	2.8	4.1	9.6
coll. and other non-salaried empl.	9.0	7.9	7.2



Campania

CHARACTERISTICS OF INFLOW BY AGE GROUP

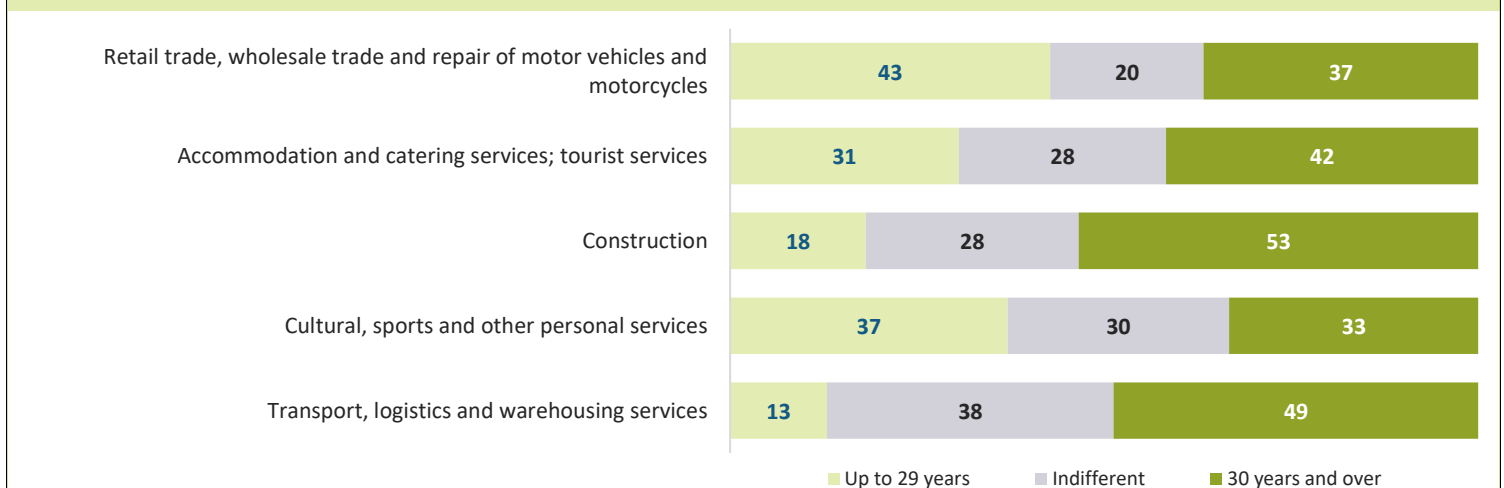


A specific detailed study concerns the age groups of the professional figures requested by companies in the region in 2023, with a detailed breakdown of the professions most requested and of the main business sectors that plan inflow from the younger segment, i.e. the figures with an age explicitly indicated by companies as "up to 29 years". The report that includes "difficulties in recruiting" offers key ideas for analysis with regard to the relationship between training and companies.

The professions with the greatest difficulty in recruiting young people
(expected inflow of young people - % share and a.v.)

Profession	Average difficulty in recruiting young people Campania region 39%	difficult to recruit young people	Inflow of young people
Engineers	77%	1,350	1,750
Engineering technicians	68%	670	980
Craft mechanics, fitters, repairers, maintenance workers on fixed/mobile machines	65%	1,180	1,830
Aesthetic care operators	56%	1,600	2,830
Casters, welders, tinsmiths, boilermakers, metal carpentry assemblers	54%	490	920
Drivers of motor and animal-drawn vehicles	52%	1,260	2,410
Specialized workers involved in the construction and maintenance of building structures	52%	2,080	4,000
Specialized workers assigned to finishing constructions	49%	1,220	2,490
Operators and employees in catering activities	48%	10,490	21,920
IT, telematics and telecommunications technicians	48%	1,450	3,030

The main business sectors seeking young people in the region (%)

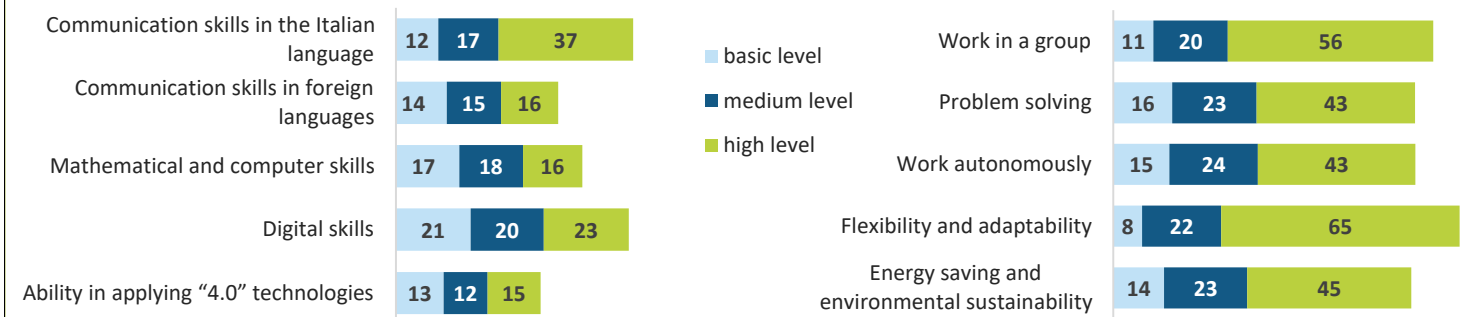


The top sectors for inflow of young people up to 29 years have been selected, as an absolute value

SKILLS REQUESTED

A skill is the "proven ability to use, in work situations or in professional and personal development, a structured set of knowledge and skills acquired in formal, non-formal or informal learning contexts". This section analyses some of the main skills required by companies for incoming profiles, as well as an in-depth analysis of the main fields of study in the territory and the skills required for each of them.

The importance of skills for the professional figures required in the region (% of total inflow)



The companies assign each skill a score from 0 (non-requested skill) to 4: the basic level corresponds to the percentage of companies that assign a score of 1 to that skill, the medium level a score of 2 and the high level a score of 3 or 4.

Skills considered of "high" importance according to the main fields of study in the region*

	Soft		Green		Technological			Communicative		
	Work in a group	Problem solving	Work autonomously	Flexibility and adaptability	Energy saving and environmental sustainability	Use mathematical and computer methods and languages	Use digital skills	Use "4.0" technologies to innovate processes	Communicate company information in Italian	Communicate company information in foreign languages
UNIVERSITY	82%	79%	69%	86%	48%	43%	70%	33%	59%	38%
Teaching and education specialisation	82%	73%	66%	88%	50%	27%	58%	12%	55%	27%
Economics specialisation	77%	76%	66%	80%	49%	49%	77%	32%	61%	42%
Civil engineering and architecture specialisation	86%	90%	83%	87%	58%	49%	93%	51%	62%	22%
HIGHER TECHNICAL EDUCATION (HTE) (ITS Academy)	83%	81%	72%	86%	58%	58%	79%	50%	50%	37%
SECONDARY (5-year diploma)	64%	52%	47%	71%	47%	20%	32%	17%	46%	21%
Administration, finance and marketing specialisation	69%	57%	50%	76%	44%	22%	50%	13%	51%	21%
Tourism, food and wine and hospitality specialisation	59%	42%	42%	61%	43%	10%	17%	11%	51%	42%
Transportation and logistics specialisation	56%	52%	40%	73%	54%	20%	10%	19%	26%	6%
Professional QUALIFICATION (3-year) or professional DIPLOMA (4-year)**	48%	31%	36%	57%	43%	8%	7%	9%	29%	9%
Catering specialisation	51%	28%	31%	53%	43%	5%	7%	5%	37%	22%
Building specialisation	48%	36%	42%	60%	46%	8%	0%	13%	18%	0%
Logistics systems and services specialisation	39%	30%	32%	52%	35%	12%	2%	12%	26%	1%

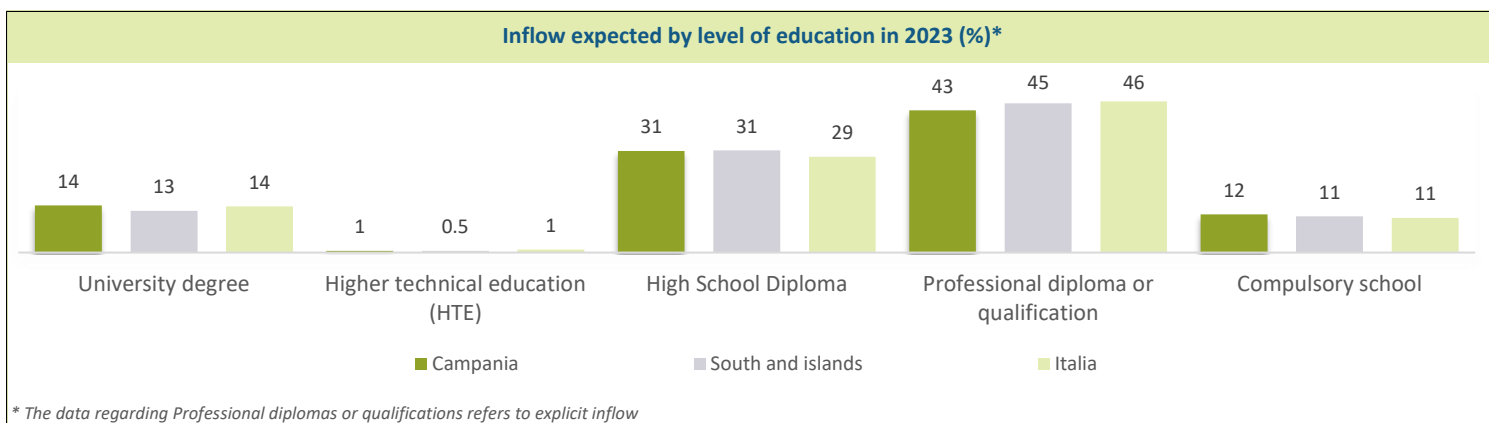
* The skills with "high" importance are those to which the companies assign a score of 3 or 4.

** The data refers to the potential inflow with a professional diploma or qualification. Please refer to the introductory text on page 6 "The fields of study that offer greatest job opportunities" for the definition of potential inflow.

Campania

FIELDS OF STUDY THAT OFFER THE GREATEST JOB OPPORTUNITIES

Below, there is some data related to the levels of education and qualifications most requested of the inflow of professional figures in 2023. Data on the demand for workers with professional diplomas or qualifications is presented based on two different approaches. In fact, in addition to workers with professional diplomas and qualifications expressly indicated ("explicit inflow"), companies are looking for workers who generically went through "compulsory education". With a specific in-depth study, there have been cases in which the request for workers who have generically gone through "compulsory education" was associated with professions for which there are three-year professional training courses formally included among the 26 in the State Regional Agreement of 1 August 2019. A further potential demand for professional qualifications was thus identified and, when added to the demand explicitly expressed by the companies as part of the survey, provides an overall estimate of the "potential inflow" expected by the companies for which a professional qualification is required.

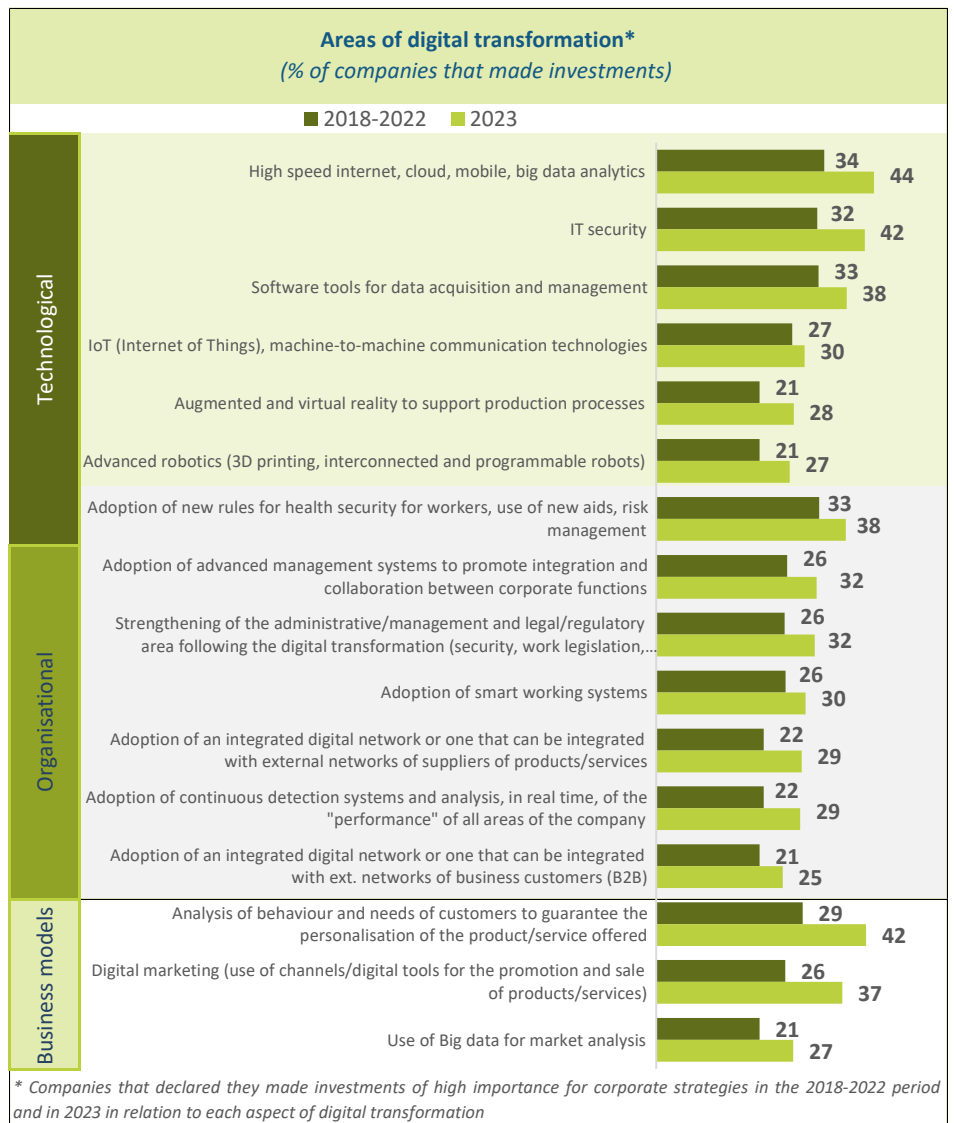
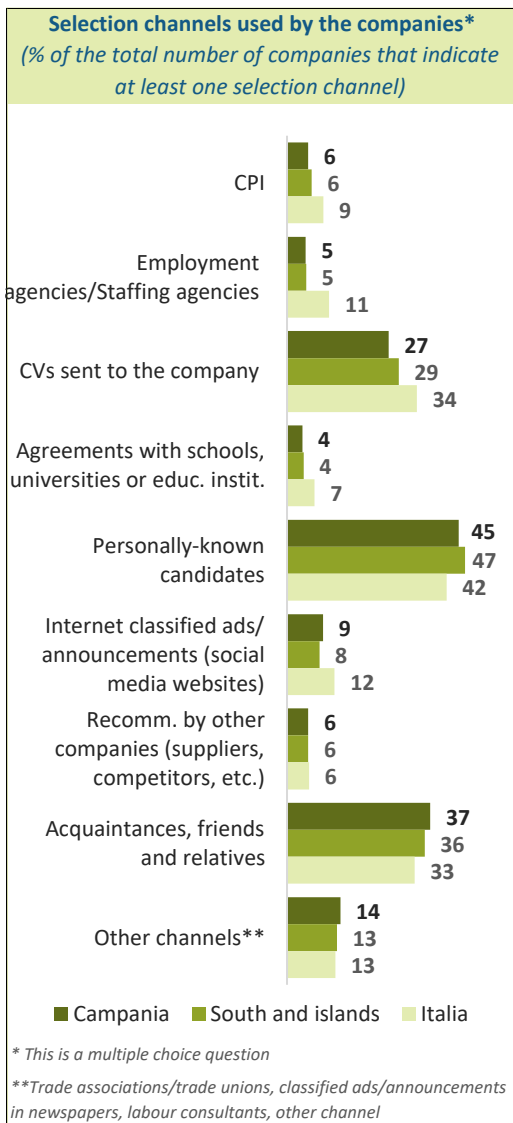
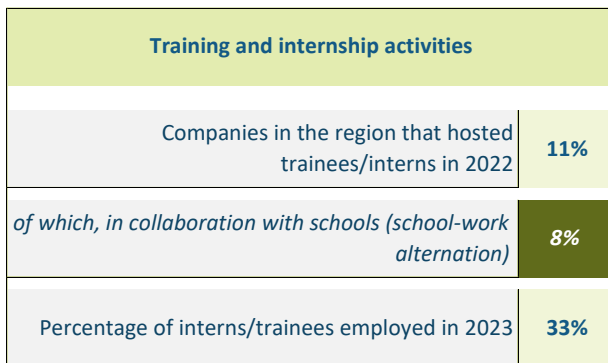
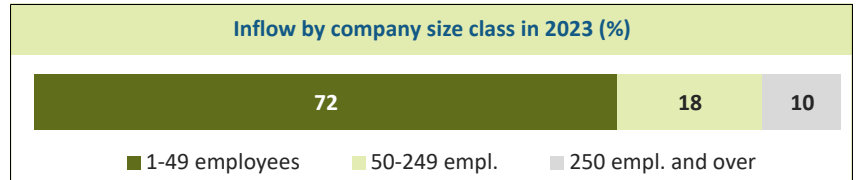
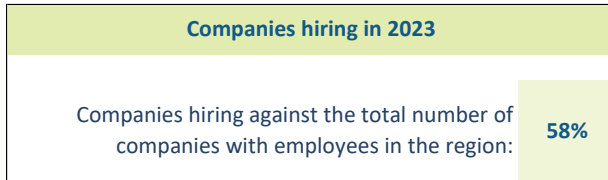


Field of Study	Expected inflow (a.v.)	% of the total	% difficult to recruit	% with experience
University	62,350	14%	41%	90%
<i>of whom with post-graduate education</i>	<i>9,196</i>	<i>15%</i>	<i>47%</i>	<i>92%</i>
Teaching and education specialisation	15,390		26%	97%
Economics specialisation	11,840		36%	80%
Civil engineering and architecture specialisation	6,060		58%	92%
Higher technical education (HTE) ITS Academy	2,220	1%	62%	80%
SECONDARY (5-year diploma)	133,740	31%	36%	71%
Administration, finance and marketing specialisation	37,980		29%	60%
Tourism, food and wine and hospitality specialisation	24,370		36%	82%
Transportation and logistics specialisation	9,500		36%	62%
Professional qualification (3-year) or professional diploma (4-year)	explicit inflow 152,850	35%	42%	67%
	potential inflow 187,420	43%	42%	67%
Catering specialisation	26,990	32,940	45%	69%
Building specialisation	18,990	30,400	44%	82%
System and logistic services specialisation	21,080	21,120	36%	55%
Compulsory school	explicit inflow 84,990	19%	36%	63%
	potential inflow 50,420	12%	33%	57%

The percentages of difficult to recruit inflow and inflow with experience refer to explicit inflow

SOME CHARACTERISTICS OF THE COMPANIES

This page presents several characteristics of the companies that are hiring, highlighting the relative share of the total number of companies with employees present in the region, and detailed breakdown by size class. The training carried out by companies for their employees in 2021 and 2022 and the share of companies that hosted trainees/interns in 2022 is also analysed. The page also presents some data on the investments made by companies in the various areas of digital transformation in 2023 and on the channels for selecting incoming personnel.



NOTE ON METHODOLOGY

The data presented came from the Excelsior survey carried out by Unioncamere in agreement with the National Agency for Active Labor Policies. The survey, which is included in the National Statistical Program (UCC-00007) among those that require a response, has been carried out on a monthly basis since 2017.

The information contained in this bulletin was acquired by processing all the information obtained through the monthly surveys carried out until August 2023, mainly using the CAWI compilation technique and carrying out approximately 275,000 interviews with companies, a representative sample of companies with employees to 2022 of the various industrial and service sectors. The estimate of the forecast of income flows is obtained by modeling the historical series of data taken from administrative sources on businesses and employment, appropriately integrated with the sample data relating to each monthly survey. Revenue (i.e. the number of employment contracts that companies intend to stipulate in a certain period) and the related characteristics refer to the hiring of employees and the flows of collaborators, temporary workers and other non-employed workers. The data relating to the forecasts for the entire year therefore no longer derive from a specific annual survey, but from the integrated processing of the available monthly surveys.

In this bulletin the analysis focuses mainly on the characteristics of the income planned for the year 2023, according to the professional profiles and levels of education required. There are also some qualitative comparisons with the 2022 data. The results of the survey are available at provincial and regional level according to a variable number of economic sectors, obtained as a merger of economic activity codes of the ATECO2007 classification. The distribution of expected revenue by "professional group" refers to the codes of the ISTAT CP2021 classification.

Excelsior Informa is created by Unioncamere in collaboration with ANPAL as part of the Excelsior Information System.

For further information, please consult the website: <http://excelsior.unioncamere.net> where data and analyzes relating to all regions and provinces are available.

Partial or total reproduction and/or dissemination of the tables contained in this publication is permitted exclusively with full citation of the source: **Unioncamere-ANPAL, Excelsior Information System, 2023.**